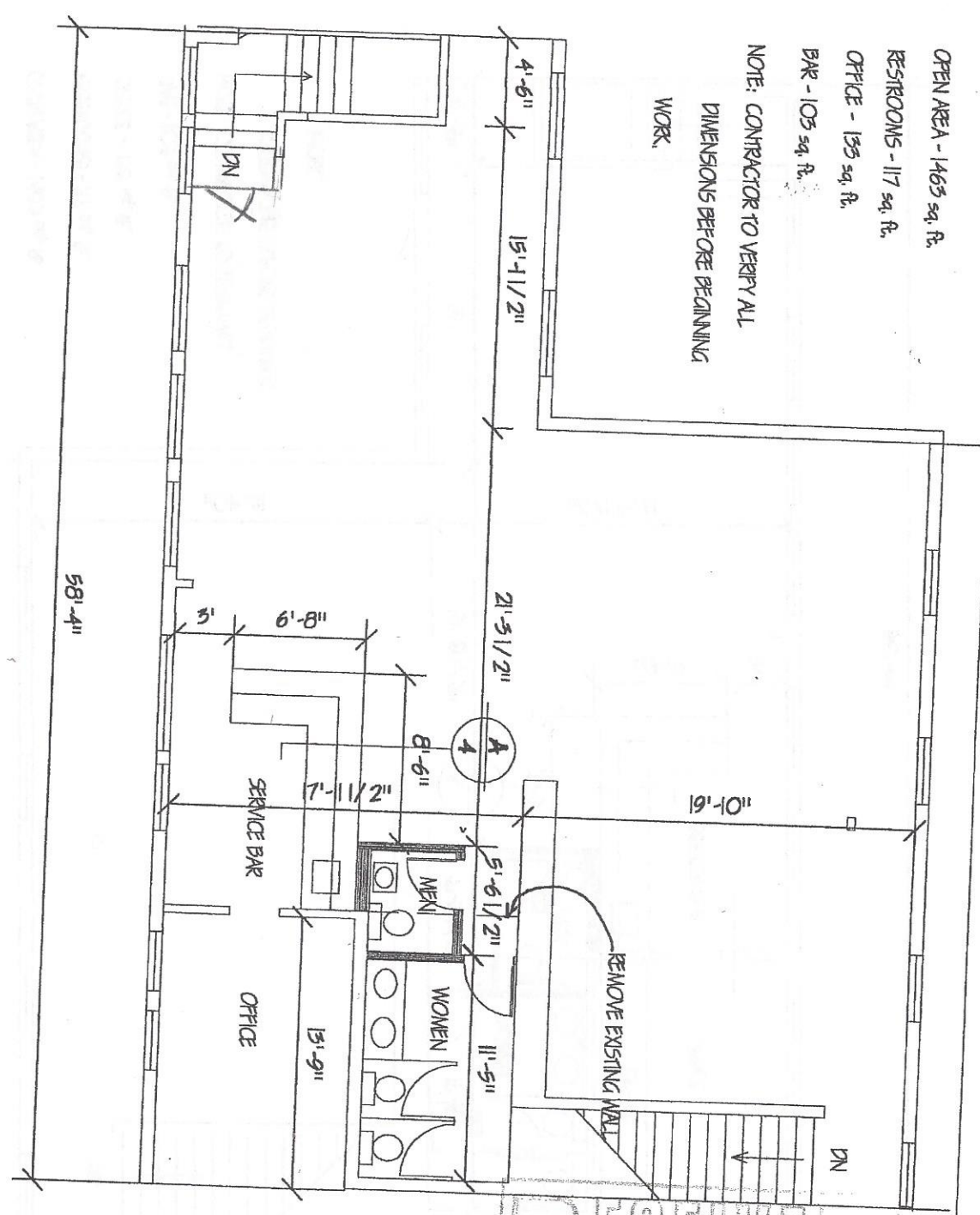


Upstairs

OPEN AREA - 1463 sq. ft.  
RESTROOMS - 117 sq. ft.  
OFFICE - 135 sq. ft.  
BAR - 103 sq. ft.

NOTE: CONTRACTOR TO VERIFY ALL  
DIMENSIONS BEFORE BEGINNING  
WORK.



RECEIVED  
AUG 28 1996

2 of 4

SHEET:

### GLINNERZ EXPANSION - SECOND FLOOR

SECOND FLOOR PLAN

SCALE: 1/8" = 1'-0"

123 E. WASHINGTON, IOWA CITY, IA 338-2010

ARCHITECT: SUSAN L. LICHT, AIA ARCHITECT  
505 E. WASHINGTON ST.  
IOWA CITY, IOWA  
338-7188